

Dear Brent Licensing Team,

I am writing to formally object to the Late Night Refreshment Licence application for Lebanese Grill on Station Road. This business is already causing significant disruption to local residents, and extending its operating hours would further exacerbate these issues. My objections are based on the prevention of public nuisance and public safety, as outlined below. I live on the street [REDACTED]

1. Smoke and Odours

Lebanese Grill produces a continuous and heavy charcoal smoke, which lingers in the air from opening until well beyond 2 AM. Depending on the wind direction, this creates an unpleasant and intrusive atmosphere, particularly at night when residents are trying to rest. It is unreasonable to expect the local community to tolerate this level of air pollution into the early hours. Please see attached photos taken from [REDACTED]



Fig 1. Smoke from Lebanese Grill during day from rear chimney

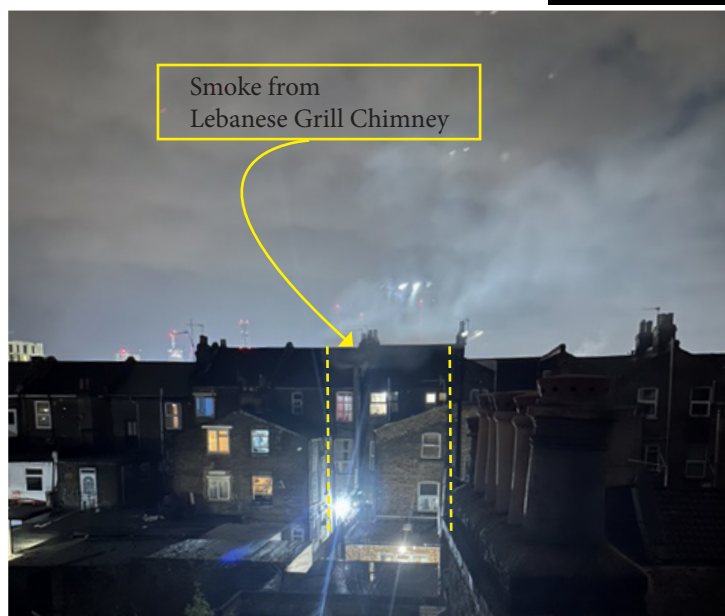


Fig 1. Smoke from Lebanese Grill at night (8th Feb)

2. Litter and Waste

There has been a noticeable increase in rubbish in the surrounding area, including takeaway boxes, food waste, and plastic packaging discarded by customers during the night. This is particularly evident on Harley Road and the streets around Bramshill Open Space Playground, where white plastic waste is accumulating.



Fig 3. Ranelagh Road 24 Feb 2025



Fig 4. Ranelagh Road 4th March '25



Fig 5. Ranelagh Road 4th March '25

2. Litter and Waste Continued.

Whilst it may be difficult to prove these takeaway boxes are from lebanese grill, there are so many of them and they are white polystyene and full of remnants of the lebanese food served there. Littering has increased markedly since it opened as people drive up onto Station Road, Harley Road and Ranelagh Road, eat in there cars then throw their rubbish out of their car window at night.



Fig 6. Takeaway boxes on Harley Road 23rd February 2025

3. Traffic Congestion and Illegal Parking

Station Road has become severely clogged with double-parked cars, many of which stop outside Lebanese Grill, leave their hazard lights flashing, and block traffic while waiting for food. This mirrors the ongoing problem seen in Harlesden, Craven Park Road, where this type of illegal parking disrupts bus routes and general traffic flow, forcing other motorists to wait.

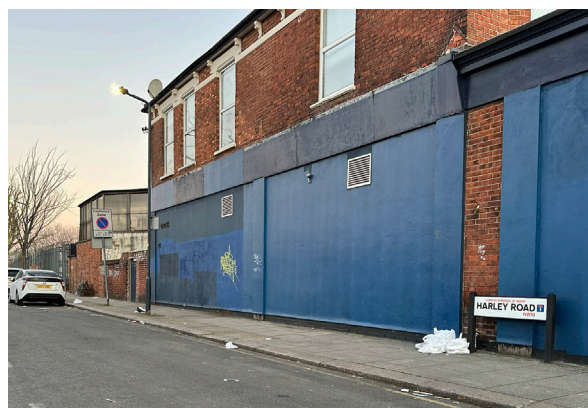


Fig 6. Takeaway boxes on Harley Road 23rd February 2025

4. Light Pollution

An extremely bright security light at the rear of Lebanese Grill remains switched on from early evening (4 PM in winter) until sunrise, seven days a week. This light is blinding and severely impacts nearby residents, creating an unnecessary and intrusive source of light pollution.



Fig 7. Light Pollution from security light



Fig 7. Light Pollution from security light 22nd Feb 2025

5. Anti-Social Behaviour (ASB) and Late-Night Disturbances

There are frequent disturbances after midnight, with large groups of males gathering outside Lebanese Grill, often loitering for extended periods before leaving their rubbish behind. This results in increased noise, littering, and disruption for local residents, requiring council services to clean up the next morning. The impact of this activity despoils the area and makes it feel less safe.

Conclusion

The operation of Lebanese Grill is already causing significant disruption, and an extension of its late-night opening would only intensify these issues. The business is not demonstrating responsibility in managing waste, pollution, or customer behaviour, and residents are left to deal with the consequences.

I respectfully urge the licensing team to reject this application in order to protect the well-being of the local community.

Yours Sincerely

[Redacted Signature]



Fig 1. Smoke from Lebanese Grill at larger size for clarity